



# Height gauges



## ***Monitoring operations in the manufacturing process***

Why carry the workpieces from a distant measuring room when they can be inspected almost on the spot?

The vertical measurement systems are 1D instruments, usually placed on a granite table, defining a reference plane, devoted to the determination of various characteristics such as height, thickness, depth, internal/external diameter,... depending on the configuration of the associated measuring probe.

The range of TESA height gauges is primarily distinguished by the variety of models available, but also by the many possibilities for applications where these instruments offer genuine performance solutions. Designed for process control of manufacturing operations or directly on a machine tool, they also provide a safe measurement when parts of the dimensions are critical.



## ***A complete family that meets the needs of demanding users***

### **TESA-HITE & TESA-HITE MAGNA range**

The height gauges of this range are specially designed for workshop measurement, where ensuring quality metrology is in generally complicated. These instruments are often subject to harsh environmental factors such as temperature, projections, etc.

### **MICRO- HITE range**

These high-end 2D height gauges are intuitive due to the clear and refined user philosophy of their embedded software. They are reliable and robust universal machines, developed for workshops that can be integrated as close as possible to the user. Multifunctional, they are a metrological “multi-user” asset, that replaces the most conventional measuring tools.

### **μ-HITE range**

Compact measuring station, the perfect compromise for measuring small parts or applications requiring a low measuring force. Based on the comparator principle (coaxial measuring according to the ABBE principle) it achieves extremely fine precision, a characteristic that is often essential for laboratory use.



## Height gauges

### *The safety of a quality product, guaranteed benefits*

Since their development phase, TESA height gauges are subject to strict internal standards aligned with the most restrictive national standards. Thanks to this close monitoring, all TESA height gauges meet the QUALITY requirements that we strive to keep as sharp as possible.

For this reason, our measurement laboratory meets the requirements for SCS accreditation (Swiss Calibration Service). Each instrument in this product line is therefore delivered with a free SCS certificate, making our products meet the requirements of many central laboratories through ILAC cooperation (International Laboratory Accreditation & Cooperation). Any hidden additional extra cost due to a re-certification of the instrument after purchase is avoided.



Calibration laboratory for TESA height gauges

### *A philosophy of use for everyone*

With their refined user interface, ergonomic panel and contextual help button, the TESA height gauges are designed to be quickly accessible to any user profile.

The required learning time is short and autonomy of use is often achieved in less than a day.



Two panels, one philosophy  
For TESA-HITE (left) and for MICRO-HITE or  $\mu$ -HITE (right)

**MICRO-HITE+M**



**TESA-HITE**



Height gauges

**TESA  $\mu$ -HITE**





|                        |  | μ-HITE                   | TESA-HITE MAGNA        |                        | TESA-HITE              |                        |
|------------------------|--|--------------------------|------------------------|------------------------|------------------------|------------------------|
| Part number            |  | 00730502*<br>00730503*   | 00730082               | 00730083               | 00730084               | 00730085               |
| Type                   | Manuel displacement                                      |                          | •                      | •                      | •                      | •                      |
|                        | Motorised displacement                                   | •                        |                        |                        |                        |                        |
| Precision              | Max. permissible errors μm, L in mm                      | Axial: ≤1<br>Offset: ≤2  | ≤8                     | ≤8                     | 2,5+4L/1000            | 2,5+4L/1000            |
|                        | Repeatability (2σ), μm                                   | Surface: ≤0,5<br>Arc: ≤1 | Surface: ≤3<br>Arc: ≤5 | Surface: ≤3<br>Arc: ≤5 | Surface: ≤2<br>Arc: ≤3 | Surface: ≤2<br>Arc: ≤3 |
|                        | SCS Certificate  | •                        | •                      | •                      | •                      | •                      |
| Instrument             | Size, mm   | 100                      | 400                    | 700                    | 400                    | 700                    |
|                        | Air cushion  |                          |                        |                        | •                      | •                      |
|                        | Fine adjustment  |                          | •                      | •                      | •                      | •                      |
|                        | Adjustable panel arm                                     |                          |                        |                        |                        |                        |
| Accessories            | Probe support Ø 6 mm                                     |                          | •                      | •                      | •                      | •                      |
|                        | Axial probe holder for insert M2,5                       | •                        |                        |                        |                        |                        |
|                        | Ball tip insert, Ø 5 mm, tungsten carbide                |                          | •                      | •                      | •                      | •                      |
|                        | Axial ball tip insert, Ø 3 mm, tungsten carbide ball tip | •                        |                        |                        |                        |                        |
|                        | Masterpiece 6,35 mm / .25 in                             | •                        | •                      | •                      |                        |                        |
| Power supply           | Masterpiece 12,7 mm / .5 in                              | •                        |                        |                        | •                      | •                      |
|                        | Integrated rechargeable battery                          |                          | •                      | •                      | •                      | •                      |
|                        | Rechargeable interchangeable battery                     |                          |                        |                        |                        |                        |
|                        | Charger  | •                        | •                      | •                      | •                      | •                      |
| Functionalities        | Power cables EU, US, UK                                  | •                        | •                      | •                      | •                      | •                      |
|                        | Single probing, culmination point                        | •                        | •                      | •                      | •                      | •                      |
|                        | Double probing, bore, axis, groove, rib                  | •                        | •                      | •                      | •                      | •                      |
|                        | Perpendicularity, straightness                           |                          |                        |                        | With external display  | With external display  |
|                        | Min, max, delta  | •                        | •                      | •                      | •                      | •                      |
|                        | Angle  | •                        |                        |                        |                        |                        |
|                        | 2D   | •                        |                        |                        |                        |                        |
|                        | Integrated calculator, configurable functions            | •                        |                        |                        |                        |                        |
|                        | Reference(s)   | 2                        | 1                      | 1                      | 1                      | 1                      |
|                        | Distance, midpoint                                       | •                        | •                      | •                      | •                      | •                      |
|                        | Tolerancing, Go-NoGo report                              | •                        |                        |                        |                        |                        |
|                        | Context-based help                                       | •                        | •                      | •                      | •                      | •                      |
|                        | Preset   | •                        | •                      | •                      | •                      | •                      |
|                        | Programs' management                                     | •                        |                        |                        |                        |                        |
|                        | Manual or automatic data transmission                    | •                        | •                      | •                      | •                      | •                      |
|                        | Data backup on USB stick (txt)                           | •                        |                        |                        |                        |                        |
|                        | Sending data through TLC port                            | •                        | •                      | •                      | •                      | •                      |
| Screenshot             | •  |                          |                        |                        |                        |                        |
| Customizable interface |  |                          | •                      | •                      | •                      | •                      |

\*The metrological specifications for these instruments are valid only for the measuring head and not for the complete system.

# Height gauges



| MICRO-HITE                         |                                    |                                    |                                    |                                    |                                    | MICRO-HITE+M                         |                                      |                                      |
|------------------------------------|------------------------------------|------------------------------------|------------------------------------|------------------------------------|------------------------------------|--------------------------------------|--------------------------------------|--------------------------------------|
| 00730073                           | 00730074                           | 00730075                           | 00730076                           | 00730077                           | 00730078                           | 00730079                             | 00730080                             | 00730081                             |
| .                                  | .                                  | .                                  | .                                  | .                                  | .                                  | .                                    | .                                    | .                                    |
| 2+2L/1000                          | 2+2L/1000                          | 2+2L/1000                          | 2+2L/1000                          | 2+2L/1000                          | 2+2L/1000                          | 1,8+2L/1000                          | 1,8+2L/1000                          | 1,8+2L/1000                          |
| Surface: $\leq 1$<br>Arc: $\leq 1$ | Surface: $\leq 1$<br>Arc: $\leq 1$ | Surface: $\leq 1$<br>Arc: $\leq 1$ | Surface: $\leq 1$<br>Arc: $\leq 1$ | Surface: $\leq 1$<br>Arc: $\leq 1$ | Surface: $\leq 1$<br>Arc: $\leq 1$ | Surface: $\leq 0,5$<br>Arc: $\leq 1$ | Surface: $\leq 0,5$<br>Arc: $\leq 1$ | Surface: $\leq 0,5$<br>Arc: $\leq 1$ |
| .                                  | .                                  | .                                  | .                                  | .                                  | .                                  | .                                    | .                                    | .                                    |
| 350                                | 600                                | 900                                | 350                                | 600                                | 900                                | 350                                  | 600                                  | 900                                  |
| .                                  | .                                  | .                                  | .                                  | .                                  | .                                  | .                                    | .                                    | .                                    |
| .                                  | .                                  | .                                  | .                                  | .                                  | .                                  | .                                    | .                                    | .                                    |
| .                                  | .                                  | .                                  | .                                  | .                                  | .                                  | .                                    | .                                    | .                                    |
| .                                  | .                                  | .                                  | .                                  | .                                  | .                                  | .                                    | .                                    | .                                    |
| .                                  | .                                  | .                                  | .                                  | .                                  | .                                  | .                                    | .                                    | .                                    |
| .                                  | .                                  | .                                  | .                                  | .                                  | .                                  | .                                    | .                                    | .                                    |
| .                                  | .                                  | .                                  | .                                  | .                                  | .                                  | .                                    | .                                    | .                                    |
| .                                  | .                                  | .                                  | .                                  | .                                  | .                                  | .                                    | .                                    | .                                    |
| .                                  | .                                  | .                                  | .                                  | .                                  | .                                  | .                                    | .                                    | .                                    |
| .                                  | .                                  | .                                  | .                                  | .                                  | .                                  | .                                    | .                                    | .                                    |
| .                                  | .                                  | .                                  | .                                  | .                                  | .                                  | .                                    | .                                    | .                                    |
| .                                  | .                                  | .                                  | .                                  | .                                  | .                                  | .                                    | .                                    | .                                    |
| .                                  | .                                  | .                                  | .                                  | .                                  | .                                  | .                                    | .                                    | .                                    |
| .                                  | .                                  | .                                  | .                                  | .                                  | .                                  | .                                    | .                                    | .                                    |
| .                                  | .                                  | .                                  | .                                  | .                                  | .                                  | .                                    | .                                    | .                                    |
| .                                  | .                                  | .                                  | .                                  | .                                  | .                                  | .                                    | .                                    | .                                    |
| .                                  | .                                  | .                                  | .                                  | .                                  | .                                  | .                                    | .                                    | .                                    |
| .                                  | .                                  | .                                  | .                                  | .                                  | .                                  | .                                    | .                                    | .                                    |
| .                                  | .                                  | .                                  | .                                  | .                                  | .                                  | .                                    | .                                    | .                                    |
| .                                  | .                                  | .                                  | .                                  | .                                  | .                                  | .                                    | .                                    | .                                    |
| .                                  | .                                  | .                                  | .                                  | .                                  | .                                  | .                                    | .                                    | .                                    |
| .                                  | .                                  | .                                  | .                                  | .                                  | .                                  | .                                    | .                                    | .                                    |
| .                                  | .                                  | .                                  | .                                  | .                                  | .                                  | .                                    | .                                    | .                                    |
| .                                  | .                                  | .                                  | .                                  | .                                  | .                                  | .                                    | .                                    | .                                    |
| .                                  | .                                  | .                                  | .                                  | .                                  | .                                  | .                                    | .                                    | .                                    |
| .                                  | .                                  | .                                  | .                                  | .                                  | .                                  | .                                    | .                                    | .                                    |
| .                                  | .                                  | .                                  | .                                  | .                                  | .                                  | .                                    | .                                    | .                                    |
| .                                  | .                                  | .                                  | .                                  | .                                  | .                                  | .                                    | .                                    | .                                    |
| .                                  | .                                  | .                                  | .                                  | .                                  | .                                  | .                                    | .                                    | .                                    |
| .                                  | .                                  | .                                  | .                                  | .                                  | .                                  | .                                    | .                                    | .                                    |
| .                                  | .                                  | .                                  | .                                  | .                                  | .                                  | .                                    | .                                    | .                                    |
| 2                                  | 2                                  | 2                                  | 2                                  | 2                                  | 2                                  | 2                                    | 2                                    | 2                                    |
| .                                  | .                                  | .                                  | .                                  | .                                  | .                                  | .                                    | .                                    | .                                    |
| .                                  | .                                  | .                                  | .                                  | .                                  | .                                  | .                                    | .                                    | .                                    |
| .                                  | .                                  | .                                  | .                                  | .                                  | .                                  | .                                    | .                                    | .                                    |
| .                                  | .                                  | .                                  | .                                  | .                                  | .                                  | .                                    | .                                    | .                                    |
| .                                  | .                                  | .                                  | .                                  | .                                  | .                                  | .                                    | .                                    | .                                    |
| .                                  | .                                  | .                                  | .                                  | .                                  | .                                  | .                                    | .                                    | .                                    |
| .                                  | .                                  | .                                  | .                                  | .                                  | .                                  | .                                    | .                                    | .                                    |
| .                                  | .                                  | .                                  | .                                  | .                                  | .                                  | .                                    | .                                    | .                                    |
| .                                  | .                                  | .                                  | .                                  | .                                  | .                                  | .                                    | .                                    | .                                    |
| .                                  | .                                  | .                                  | .                                  | .                                  | .                                  | .                                    | .                                    | .                                    |
| .                                  | .                                  | .                                  | .                                  | .                                  | .                                  | .                                    | .                                    | .                                    |
| .                                  | .                                  | .                                  | .                                  | .                                  | .                                  | .                                    | .                                    | .                                    |
| .                                  | .                                  | .                                  | .                                  | .                                  | .                                  | .                                    | .                                    | .                                    |
| .                                  | .                                  | .                                  | .                                  | .                                  | .                                  | .                                    | .                                    | .                                    |
| .                                  | .                                  | .                                  | .                                  | .                                  | .                                  | .                                    | .                                    | .                                    |
| .                                  | .                                  | .                                  | .                                  | .                                  | .                                  | .                                    | .                                    | .                                    |
| .                                  | .                                  | .                                  | .                                  | .                                  | .                                  | .                                    | .                                    | .                                    |
| .                                  | .                                  | .                                  | .                                  | .                                  | .                                  | .                                    | .                                    | .                                    |
| .                                  | .                                  | .                                  | .                                  | .                                  | .                                  | .                                    | .                                    | .                                    |
| .                                  | .                                  | .                                  | .                                  | .                                  | .                                  | .                                    | .                                    | .                                    |

## MICRO-HITE

- **PANEL**
  - Hybrid with colour touch screen and keyboard
  - Refined keyboard for easy handling without confusion
  - Adjustable support for optimal reading of the screen at any time
- **Autonomy**
  - Rechargeable interchangeable battery
  - Infinite operative with a backup battery
- **MEASUREMENT**
  - Patented QUICKCENTER technology integrated to efficiently determine the culmination points
  - Advanced functions for a multi-task instrument, accessible to all users
  - Context-based help to avoid incorrect use and bad results
  - Clear results to decrease possible errors due to bad interpretation of the displayed results
- **INSTRUMENT**
  - Robust construction to ensure longevity and stability of results over time
- **DATA MANAGEMENT**
  - Sending values to computer via TLC port
  - Automatic creation of pdf reports or txt file on USB stick
  - Data printing via USB printer
- **SCS CALIBRATION CERTIFICATE**
  - Free SCS Certificate supplied with purchase to avoid any additional extra costs for calibration of the instrument directly after purchase



00730074

|                                 |   |
|---------------------------------|---|
| Standard                        | Factory standard  |
| Resolution                      | 0,0001 / 0,001 / 0,01 mm<br>0.00001 / 0.0001 / 0.001 in                                   |
| Zero                            | Fixed   |
| Coefficient of linear expansion | 11,5 x 10 <sup>-6</sup> K <sup>-1</sup>   |
| Material                        | Cast iron base and frame  |
| Panel                           | Colour & touch screen, 84 x 152 mm<br>Keyboard: backlit                                   |
| Weight                          | Model 350: 33 kg<br>Model 600: 37 kg<br>Model 900: 45 kg                                  |
| Power supply                    | Power connection<br>Battery rechargeable interchangeable                                  |
| Data output                     | TLC, USB  |
| Function(s)                     | Measuring probe can be manually displaced with a displacement wheel<br>Air cushion system |
| Execution                       | Manual  |
| Autonomy                        | 8 hours (with a battery block)<br>Infinite (with 2 battery blocks)                        |
| Included in delivery            | SCS calibration certificate<br>Declaration of conformity                                  |
| Measuring force                 | 1,6 ± 0,25 N  |
| Units                           | mm / in   |



## 2D height gauges

| Part number     | Designation | Measuring range mm | Maxi. permissible errors $\mu\text{m}$ | Repeatability limit $\mu\text{m}$        | Max. permissible perp. error $\mu\text{m}$ | Measuring force N | Weight kg | Fine adjustment |
|-----------------|-------------|--------------------|--|--|--|-------------------|-----------|-----------------|
| <b>00730073</b> | MH 350      | 365                | 2 + 2L                                 | On surface: $\leq 1$<br>On arc: $\leq 1$ | Frontal: 5<br>Lateral: 5                   | 1,6 $\pm$ 0,25    | 33        | Without         |
| <b>00730074</b> | MH 600      | 615                | 2 + 2L                                 | On surface: $\leq 1$<br>On arc: $\leq 1$ | Frontal: 7<br>Lateral: 7                   | 1,6 $\pm$ 0,25    | 37        | Without         |
| <b>00730075</b> | MH 900      | 920                | 2 + 2L                                 | On surface: $\leq 1$<br>On arc: $\leq 1$ | Frontal: 9<br>Lateral: 9                   | 1,6 $\pm$ 0,25    | 45        | Without         |
| <b>00730076</b> | MH 350F     | 365                | 2 + 2L                                 | On surface: $\leq 1$<br>On arc: $\leq 1$ | Frontal: 5<br>Lateral: 5                   | 1,6 $\pm$ 0,25    | 33        | With            |
| <b>00730077</b> | MH 600F     | 615                | 2 + 2L                                 | On surface: $\leq 1$<br>On arc: $\leq 1$ | Frontal: 7<br>Lateral: 7                   | 1,6 $\pm$ 0,25    | 37        | With            |
| <b>00730078</b> | MH 900F     | 920                | 2 + 2L                                 | On surface: $\leq 1$<br>On arc: $\leq 1$ | Frontal: 9<br>Lateral: 9                   | 1,6 $\pm$ 0,25    | 45        | With            |

### Accessories

| Part number        | Designation   |
|--------------------|---|
| <b>00760222</b>    | Support for accessories   |
| <b>00760140</b>    | IG13 kit  |
| <b>00760235</b>    | USB printer   |
| <b>00760250</b>    | Thermal paper (4 rolls)   |
| <b>00760124</b>    | Practice part   |
| <b>00760151</b>    | Dust cover, 350 mm  |
| <b>00760152</b>    | Dust cover, 600 mm  |
| <b>00760153</b>    | Dust cover, 900 mm  |
| <b>04981001</b>    | DATA-DIRECT software  |
| <b>04981002</b>    | STAT-EXPRESS software   |
| <b>DATA-VIEWER</b> | Free data acquisition software  |
| <b>00760244</b>    | Rechargeable battery  |
| <b>04760183</b>    | Complete kit TLC-BLE Bluetooth® emitter + USB dongle receiver + 1,5 m extension cable |
| <b>04760184</b>    | TLC-BLE Bluetooth® emitter  |
| <b>04760185</b>    | USB receiver + 1,5 m extension cable  |
| <b>00760249</b>    | Cleaning liquid for granite table, 1 L  |
| <b>00760245</b>    | Loading station   |
| <b>00760252</b>    | Battery kit   |
| <b>00760258</b>    | 14V charger + adapter   |



## MICRO-HITE+M

- **PANEL**
  - Hybrid with colour touch screen and keyboard
  - Refined keyboard for easy handling without confusion
  - Adjustable support for optimal reading of the screen at any time
- **Autonomy**
  - Rechargeable interchangeable battery
  - Infinite operative with a backup battery
- **MEASUREMENT**
  - Patented QUICKCENTER technology integrated to efficiently determine the culmination points
  - Advanced functions for a multi-task instrument, accessible to all users
  - Context-based help to avoid incorrect use and bad results
  - Clear results to decrease possible errors due to bad interpretation of the displayed results
- **INSTRUMENT**
  - Robust construction to ensure longevity and stability of results over time
  - Intelligent hand-wheel that integrates the FEEL&MOVE technology for fast and precise probe positioning.
- **DATA MANAGEMENT**
  - Sending values to computer via TLC port
  - Automatic creation of pdf reports or txt file on USB stick
  - Data printing via USB printer
- **SCS CALIBRATION CERTIFICATE**
  - Free SCS Certificate supplied with purchase to avoid any additional extra costs for calibration of the instrument directly after purchase



00730080

|                                 |  |
|---------------------------------|--|
| Standard                        | Factory standard   |
| Resolution                      | 0,0001 / 0,001 / 0,01 mm<br>0.00001 / 0.0001 / 0.001 in                                      |
| Zero                            | Fixed  |
| Coefficient of linear expansion | 11,5 x 10 <sup>-6</sup> K <sup>-1</sup>  |
| Material                        | Cast iron base and frame   |
| Panel                           | Colour & touch screen, 84 x 152 mm<br>Keyboard: backlit                                      |
| Weight                          | Model 350: 33 kg<br>Model 600: 37 kg<br>Model 900: 45 kg                                     |
| Power supply                    | Power connection<br>Rechargeable interchangeable battery                                     |
| Data output                     | TLC, USB   |
| Function(s)                     | Measuring probe can be displaced (motorised) with a displacement wheel<br>Air cushion system |
| Execution                       | Motorised  |
| Autonomy                        | 8 hours (with a battery block)<br>Infinite (with two battery blocks)                         |
| Included in delivery            | SCS calibration certificate<br>Declaration of conformity                                     |
| Measuring force                 | 1,6 ± 0,25 N   |
| Units                           | mm / in  |

## 2D height gauges

| Part number     | Designation | Measuring range mm | Max. permissible errors $\mu\text{m}$ | Repeatability limit $\mu\text{m}$          | Max. permissible perp. error $\mu\text{m}$ | Measuring force N | Weight kg |
|-----------------|-------------|--------------------|---------------------------------------|--|--|-------------------|-----------|
| <b>00730079</b> | MH+M 350    | 365                | 1,8 + 2L                              | On surface: $\leq 0,5$<br>On arc: $\leq 1$ | Frontal: 5<br>Lateral: 5                   | $1,6 \pm 0,25$    | 33        |
| <b>00730080</b> | MH+M 600    | 615                | 1,8 + 2L                              | On surface: $\leq 0,5$<br>On arc: $\leq 1$ | Frontal: 7<br>Lateral: 7                   | $1,6 \pm 0,25$    | 37        |
| <b>00730081</b> | MH+M 900    | 920                | 1,8 + 2L                              | On surface: $\leq 0,5$<br>On arc: $\leq 1$ | Frontal: 9<br>Lateral: 9                   | $1,6 \pm 0,25$    | 45        |

### Accessories

| Part number        | Designation   |
|--------------------|---|
| <b>00760222</b>    | Support for accessories   |
| <b>00760140</b>    | IG13 kit  |
| <b>00760235</b>    | USB printer   |
| <b>00760250</b>    | Thermal paper (4 rolls)   |
| <b>00760124</b>    | Practice part   |
| <b>00760151</b>    | Dust cover, 350 mm  |
| <b>00760152</b>    | Dust cover, 600 mm  |
| <b>00760153</b>    | Dust cover, 900 mm  |
| <b>04981001</b>    | DATA-DIRECT software  |
| <b>04981002</b>    | STAT-EXPRESS software   |
| <b>DATA-VIEWER</b> | Free data acquisition software  |
| <b>00760244</b>    | Rechargeable battery  |
| <b>04760183</b>    | Complete kit TLC-BLE Bluetooth® emitter + USB dongle receiver + 1,5 m extension cable |
| <b>04760184</b>    | TLC-BLE Bluetooth® emitter  |
| <b>04760185</b>    | USB receiver + 1,5 m extension cable  |
| <b>00760249</b>    | Cleaning liquid for granite table, 1 L  |
| <b>00760245</b>    | Loading station   |
| <b>00760252</b>    | Battery kit   |
| <b>00760258</b>    | 14V charger + adapter   |



## TESA-HITE

- **PANEL**
  - Protected against the penetration of liquids or dust (IP65)
  - Big colour screen for better reading in dimly lit surroundings
  - Black display background for excellent contrast
  - Large numbers displayed on the screen (21 mm) for optimal readability
  - Keyboard with few buttons for easy learning without confusion
- **AUTONOMY**
  - Long battery life (60h) to avoid too frequent recharging
- **MEASURE**
  - Philosophy of use similar to tablets or smartphones
  - Quick access to the first measurement from start up (<4s) for a significant time saving
  - QUICKCENTER DYNAMIC technology integrated to efficiently determine the culmination points
  - Context-based help to avoid incorrect use and bad results
  - The interface can be customized according to the user's wishes
- **SCS CALIBRATION CERTIFICATE**
  - Free SCS certificate provided to avoid additional costs for re-calibration at the initial purchase



00730084

|                                 |  |
|---------------------------------|--|
| Standard                        | Factory standard   |
| Resolution                      | 0,0001 / 0,001 / 0,01 mm<br>0.00001 / 0.0001 / 0.001 in                                |
| Zero                            | Fixed  |
| Coefficient of linear expansion | $(12 \pm 1,5) \times 10^{-6} K^{-1}$   |
| Material                        | Cast iron base   |
| Degree of protection            | Panel: IP65  |
| Particular characteristic       | Integrated fine adjustment<br>Air cushion system                                       |
| Panel                           | Panel: 155 x 210 x 43 mm<br>Screen: colour, 121 x 92 mm<br>Value on screen: 20 x 10 mm |
| Weight                          | 400 model: 24 kg<br>700 model: 30 kg   |
| Power supply                    | Power connection<br>Rechargeable battery integrated                                    |
| Data output                     | TLC  |
| Function(s)                     | Manual displacement of the measuring probe   |
| Execution                       | Manual   |
| Autonomy                        | ≈ 60 h   |
| Included in delivery            | SCS calibration certificate<br>Declaration of conformity                               |
| Measuring force                 | 1,5 ± 0,5 N  |
| Units                           | mm / in  |

## 1D height gauges

| Part number     | Designation | Measuring range mm | Max. permissible errors $\mu\text{m}$ | Repeatability limit $\mu\text{m}$        | Max. permissible perp. error $\mu\text{m}$ | Measuring force N | Weight kg |
|-----------------|-------------|--------------------|---------------------------------------|--|--|-------------------|-----------|
| <b>00730084</b> | TH 400      | 415                | 2,5 + 4L                              | On surface: $\leq 2$<br>On arc: $\leq 3$ | 9  | 1,5 $\pm$ 0,5     | 24        |
| <b>00730085</b> | TH 700      | 715                | 2,5 + 4L                              | On surface: $\leq 2$<br>On arc: $\leq 3$ | 13   | 1,5 $\pm$ 0,5     | 30        |

### Accessories

| Part number        | Designation   |
|--------------------|---|
| <b>00760124</b>    | Practice part   |
| <b>00760152</b>    | Dust cover, 600 mm  |
| <b>00760153</b>    | Dust cover, 900 mm  |
| <b>04981001</b>    | DATA-DIRECT software  |
| <b>04981002</b>    | STAT-EXPRESS software   |
| <b>DATA-VIEWER</b> | Free data acquisition software  |
| <b>04760183</b>    | Complete kit TLC-BLE Bluetooth® emitter + USB dongle receiver + 1,5 m extension cable |
| <b>04760184</b>    | TLC-BLE Bluetooth® emitter  |
| <b>04760185</b>    | USB receiver + 1,5 m extension cable  |
| <b>00760249</b>    | Cleaning liquid for granite table, 1 L  |
| <b>00760258</b>    | 14V charger + adapter   |



## TESA-HITE MAGNA

- **PANEL**
  - Protected against the penetration of liquids or dust (IP65)
  - Big colour screen for better reading in dimly lit surroundings
  - Black display background for excellent contrast
  - Large numbers displayed on the screen (21 mm) for optimal readability
  - Keyboard with few buttons for easy learning without confusion
- **AUTONOMY**
  - Long battery life (60h) to avoid too frequent recharging
- **MEASURE**
  - Philosophy of use similar to tablets or smartphones
  - Quick access to the first measurement from start up (<4s) for a significant time saving
  - Magnetic measuring system (patented) ensuring functioning in the extreme conditions of the workshop
  - QUICKCENTER DYNAMIC technology integrated to efficiently determine the culmination points
  - Context-based online help to avoid incorrect use and bad results
  - The interface can be customized according to the user's wishes
- **SCS CALIBRATION CERTIFICATE**
  - Free SCS certificate provided to avoid additional costs for re-calibration at the initial purchase



00730082

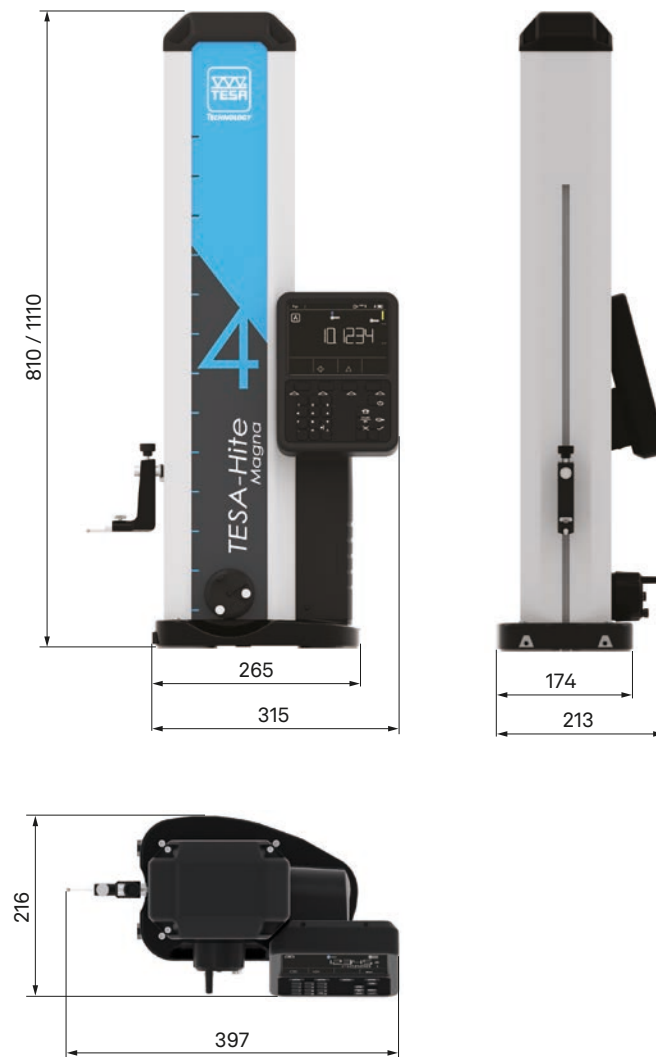
|                                 |  |
|---------------------------------|--|
| Standard                        | Factory standard   |
| Resolution                      | 0,001 / 0,005 / 0,01 mm<br>0.0001 / 0.0002 / 0.001 in                                  |
| Zero                            | Fixed  |
| Coefficient of linear expansion | $(12 \pm 1,5) \times 10^{-6} K^{-1}$   |
| Material                        | Cast iron base   |
| Degree of protection            | Measuring system: IP55<br>Panel: IP65  |
| Particular characteristic       | Integrated fine adjustment   |
| Panel                           | Panel: 155 x 210 x 43 mm<br>Screen: colour, 121 x 92 mm<br>Value on screen: 20 x 10 mm |
| Weight                          | 400 model: 15 kg<br>700 model: 18 kg   |
| Power supply                    | Power connection<br>Rechargeable battery integrated                                    |
| Data output                     | TLC  |
| Function(s)                     | Manual displacement of the measuring probe   |
| Execution                       | Manual   |
| Autonomy                        | ≈ 60 h   |
| Included in delivery            | SCS calibration certificate<br>Declaration of conformity                               |
| Measuring force                 | 1,5 ± 0,5 N  |
| Units                           | mm / in  |

## 1D height gauges

| Part number     | Designation | Measuring range mm | Max. permissible errors $\mu\text{m}$ | Repeatability limit $\mu\text{m}$        | Measuring force N | Weight kg |
|-----------------|-------------|--------------------|---------------------------------------|--|-------------------|-----------|
| <b>00730082</b> | TH MG 400   | 415                | <8                                    | On surface: $\leq 3$<br>On arc: $\leq 5$ | $1,5 \pm 0,5$     | 15        |
| <b>00730083</b> | TH MG 700   | 715                | <8                                    | On surface: $\leq 3$<br>On arc: $\leq 5$ | $1,5 \pm 0,5$     | 18        |

### Accessories

| Part number        | Designation   |
|--------------------|---|
| <b>00760124</b>    | Practice part   |
| <b>00760152</b>    | Dust cover, 600 mm  |
| <b>00760153</b>    | Dust cover, 900 mm  |
| <b>04981001</b>    | DATA-DIRECT software  |
| <b>04981002</b>    | STAT-EXPRESS software   |
| <b>DATA-VIEWER</b> | Free data acquisition software  |
| <b>04760183</b>    | Complete kit TLC-BLE Bluetooth® emitter + USB dongle receiver + 1,5 m extension cable |
| <b>04760184</b>    | TLC-BLE Bluetooth® emitter  |
| <b>04760185</b>    | USB receiver + 1,5 m extension cable  |
| <b>00760249</b>    | Cleaning liquid for granite table, 1 L  |
| <b>00760258</b>    | 14V charger + adapter   |



## TESA $\mu$ -HITE

- **PANEL**
  - Hybrid with colour touch screen and keyboard
  - Refined keyboard for easy handling without confusion
- **MEASUREMENT**
  - Advanced functions (angle, parallelism, 2D, ...) for a multi-task instrument, accessible to all users
  - Context-based online help to avoid incorrect use and bad results
  - Clear interface to decrease possible errors due to bad interpretation of the displayed results
  - Flexible since the instrument can be used as 1D probe as well as height gauge
- **INSTRUMENT**
  - Turnkey solution easy to set up and quickly operational
  - Its small footprint makes it an instrument that can be integrated and moved in any kind of workshop close to production machines
- **DATA MANAGEMENT**
  - Sending values to computer via TLC port (cable or Bluetooth)
  - Automatic creation of pdf reports or txt files on USB stick
  - Data printing via USB printer
- **SCS CALIBRATION CERTIFICATE**
  - Free SCS Certificate supplied with purchase to avoid any additional extra costs for calibration of the instrument directly after purchase



00730503

|                                 |  |
|---------------------------------|--|
| Standard                        | Factory standard   |
| Resolution                      | 0,001 mm / 0,0001 mm<br>0.0001 in / 0.00005 in                                     |
| Zero                            | Fixed  |
| Coefficient of linear expansion | 11,5 x 10 <sup>-6</sup> K <sup>-1</sup>  |
| Material                        | Plate: granite<br>Pole: hardened steel<br>Measuring head support: cast iron        |
| Dimensions                      | Granite: 200 x 300 x 50 mm<br>Pole: Ø 50 x 300 mm                                  |
| Degree of protection            | Measuring head: IP50   |
| Panel                           | Colour & touch screen, 84 x 152 mm<br>Keyboard: backlit                            |
| Weight                          | Granite + pole + support: 16,2 kg<br>Panel + box: 1,5 kg<br>Measuring head: 2,5 kg |
| Data output                     | USB, TLC   |
| Maximum displacement speed      | Fast displacement: 10, 20, 30, 40 mm/s<br>Probing: 5, 10 mm/s                      |
| Execution                       | Motorised  |
| Included in delivery            | SCS calibration certificate<br>Declaration of conformity                           |
| Measuring force                 | 1,0 ± 0,2 N<br>0,6 ± 0,2 N   |
| Units                           | mm / in  |

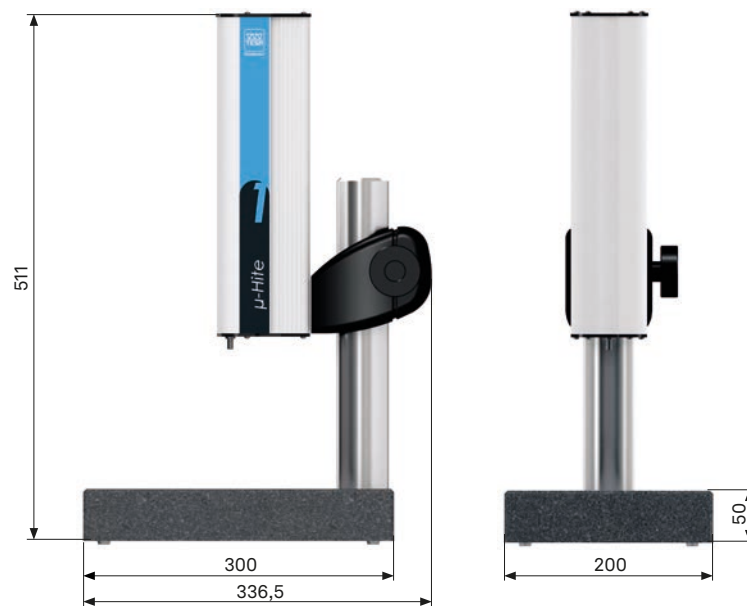


## Measuring station

| Part number     | Designation                                   | Max. permissible errors<br>$\mu\text{m}$ | Repeatability limit<br>$\mu\text{m}$ | Measuring force<br>N | Execution |
|-----------------|---|--|--------------------------------------|----------------------|-----------|
| <b>00730503</b> | $\mu$ -HITE                                   | Axial: 1<br>Offset: 2                    | Axial: 0,5<br>Offset: 1              | 0,6 or 1             | Motorised |
| <b>00730502</b> | $\mu$ -HITE without granite, pole and support | Axial: 1<br>Offset: 2                    | Axial: 0,5<br>Offset: 1              | 0,6 or 1             | Motorised |
| <b>00730504</b> | Retrofit kit for former $\mu$ -HITE           |  |                                      | 0,6 or 1             | Motorized |

### Accessories

| Part number        | Designation   |
|--------------------|---|
| <b>00760235</b>    | USB printer   |
| <b>00760250</b>    | Thermal paper (4 rolls)   |
| <b>04981001</b>    | DATA-DIRECT software  |
| <b>04981002</b>    | STAT-EXPRESS software   |
| <b>DATA-VIEWER</b> | Free data acquisition software  |
| <b>04760183</b>    | Complete kit TLC-BLE Bluetooth® emitter + USB dongle receiver + 1,5 m extension cable |
| <b>04760184</b>    | TLC-BLE Bluetooth® emitter  |
| <b>04760185</b>    | USB receiver + 1,5 m extension cable  |
| <b>00760258</b>    | 14V charger + adapter   |
| <b>00760249</b>    | Cleaning liquid for granite table, 1 L  |



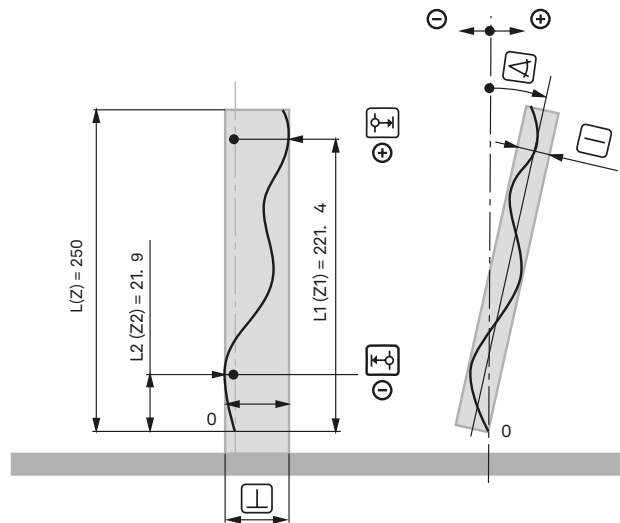
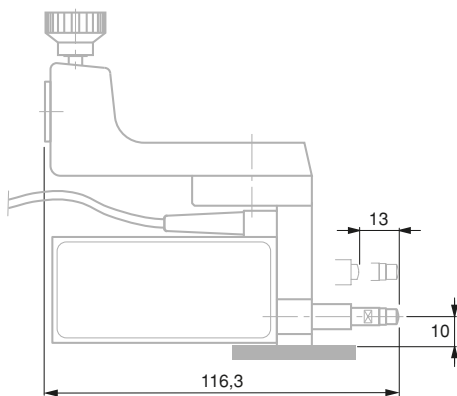
### IG13 probe and accessories

The IG13 probe has been specially developed for the range of the MICRO-HITE (manual or motorised) height gauges for reliability and accuracy reasons. Robust, it is used in laboratories as well as workshops where the working environment is more restrictive.



|                            |   |
|----------------------------|---|
| Measuring range            | 13 mm   |
| Maximum permissible errors | 1 $\mu\text{m}$                               |
| Measuring force            | 0,45 N at zero<br>0,75 N at stop              |
| Included in delivery       | Measuring report<br>Declaration of conformity |

| Part number | Designation                                     | Remarks                                   |
|-------------|---|---|
| 00760138    | Support for IG13                                |   |
| 00760139    | Probe IG13                                      |   |
| 00760140    | Kit IG13  |   |
| 00760247    | Connection cable to the MH or MH+M height gauge | Useable with panel 007600220 and 00760221 |



## Accessories for perpendicularity measurement

### Supports for accessories

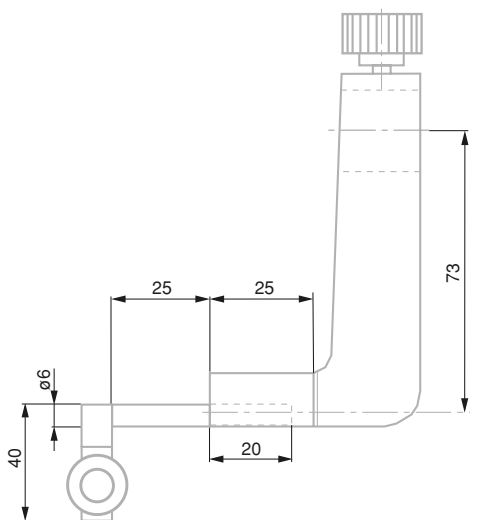
Certain height gauges of the range are adjusted in their perpendicularity (frontal plane) so that they can be used as a squareness measuring instrument by using a lever-type dial test indicator or other similar accessory. In this configuration we speak of a mechanical perpendicularity deviation only.

- Manual MICRO-HITE models
- Motorised MICRO-HITE+M models
- Manual TESA-HITE models (with external display)

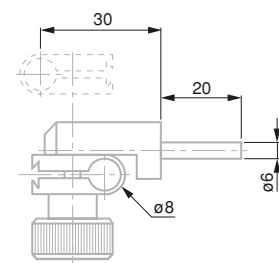
For example, a TWIN-T10 display coupled to an inductive probe and its support is an optimal configuration for detecting perpendicularity deviations. Other configurations are also possible.



| Part number | Designation            |
|-------------|------------------------|
| 00760222    | Holder for accessories |
| 00760166    | Holder for accessories |



00760222



00760166

## ***Printer and accessories***

Together with instruments in the MICRO-HITE range as well as the TESA  $\mu$ -HITE measuring station, data can be automatically and directly sent to a printer connected to the control panel.

As the printer is optional, it can be connected to an instrument in this range at any time of its use.



| Part number     | Designation             | Remarks                        |
|-----------------|-------------------------|--------------------------------|
| <b>00760235</b> | USB Printer             | For panel 00760233 or 00760234 |
| <b>00760250</b> | Thermal paper (4 rolls) | For printer 00760235           |

## ***MICRO-HITE fine adjustment system***



| Part number     | Designation         | Remarks             |
|-----------------|---------------------|---------------------|
| <b>00760246</b> | Fine adjustment kit | For MICRO-HITE 2016 |

## Other accessories for height gauges

### Battery and accessories

The power supply of a MICRO-HITE or a MICRO-HITE + M can be achieved via two means:

- via a network connected to power
- via an integrated battery in the instrument, this battery is rechargeable and easy to remove.

With an accumulator, work on the control granite is therefore much easier to the extent that no power cable impedes the operator's movements with the height gauge.

When used mainly on battery power, it is highly advisable to purchase a second battery pack that will, through an interchangeable system, always have an operational battery when the other is charging. This allows an infinite autonomy unlike the instruments with an integrated battery without possibility of exchange.



| Part number     | Designation                        | Remarks                   |
|-----------------|------------------------------------|---------------------------|
| <b>00760244</b> | Rechargeable battery pack          | For MICRO-HITE 2016 range |
| <b>00760258</b> | 14V charger + adapter              | For MICRO-HITE 2016 range |
| <b>063684</b>   | Adapter, jack plug Ø 1,35 to Ø 2,1 | For power supply 00760251 |

### Cleaning liquid for granite table

- SCOPE
  - Thorough cleaning of all types of stone surfaces
  - Daily or weekly use
  - Apply with a lint free cloth and then wipe with a dry cloth.
- AUTONOMY
  - Cleaning is an important part of preventive maintenance. It ensures correct measurements and extends the life of your granite.



| Part number     | Designation                            |
|-----------------|--|
| <b>00760249</b> | Cleaning liquid for granite table, 1 L |

## Dust cover

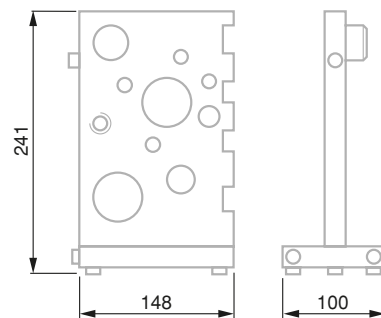
In certain situations the columns are used in harsh production environments characterized by a high rate of dust and frequent spills of liquid (water, oil, ...). Thus, a cover can be the essential accessory to effectively protect the instrument when not in use.



| Part number | Designation        |
|-------------|--------------------|
| 00760151    | Dust cover, 350 mm |
| 00760152    | Dust cover, 600 mm |
| 00760153    | Dust cover, 900 mm |

## Excercise piece

Just as learning an instrument is a key moment to confirm optimum productivity later, TESA has developed an exercise piece that allows to review all metrological options that offer its vertical measuring ranges.



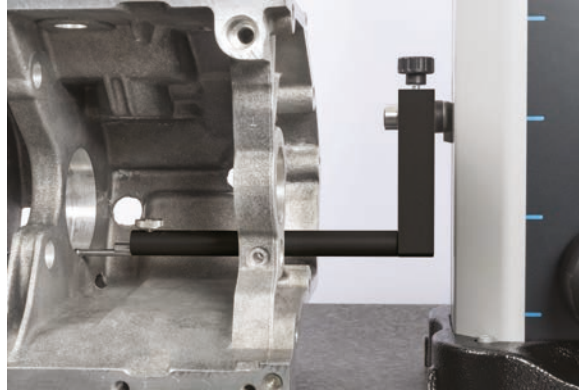
00760124

| Part number | Designation    |
|-------------|----------------|
| 00760124    | Practice piece |

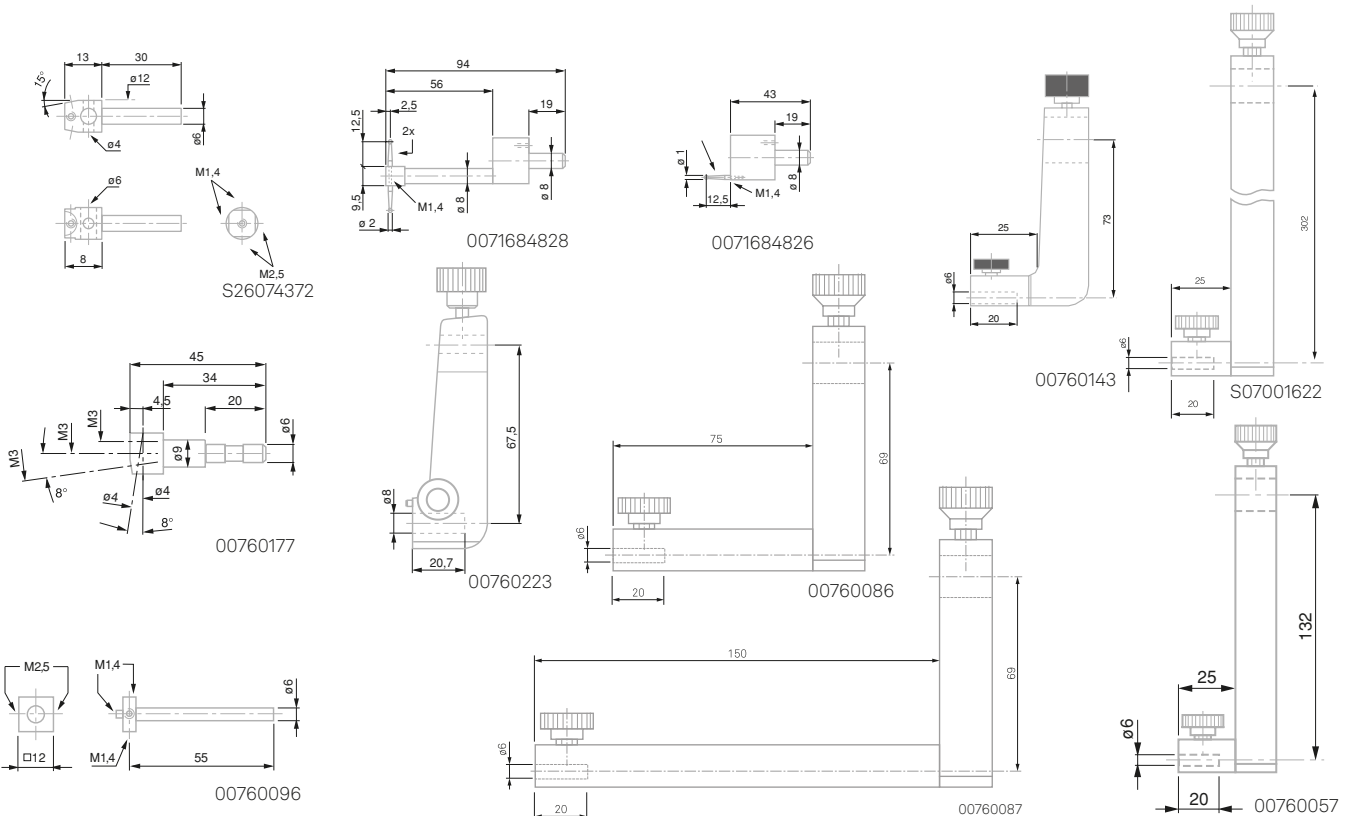
## Other accessories for height gauges

### Probe holders for TESA-HITE and MICRO-HITE ranges

To provide the most suitable solution for every need, TESA offers a wide range of probe insert holders directly compatible with the columns such as TESA-HIT, TESA-HITE MAGNA, TESA-HITE plus M, MICRO-HITE and MICRO-HITE + M.



| Part number | Fixing<br>mm | Particular characteristics                                    |
|-------------|--------------|---|
| 00760057    | Ø 14,5       | For Ø 6 mm inserts  |
| 00760086    | Ø 14,5       | For Ø 6 mm inserts  |
| 00760087    | Ø 14,5       | For Ø 6 mm inserts  |
| 00760143    | Ø 14,5       | For Ø 6 mm inserts  |
| S07001622   | Ø 14,5       | For Ø 6 mm inserts  |
| 00760223    | Ø 14,5       | For Ø 8 mm inserts  |
| 0071684828  | Ø 8          | For M1,4 inserts (including Ø 2 and Ø 2,5)                    |
| 0071684826  | Ø 8          | For M1,4 inserts (including Ø 1)                              |
| S26074372   | Ø 6          | For insert Ø 4 mm (1 x), Ø 6 mm (1 x), M1,4 (2 x), M2,5 (2 x) |
| 00760096    | Ø 6          | For M1,4 (3 x) and M2,5 (2 x) inserts                         |
| 00760177    | Ø 6          | For M3 inserts  |
| 00760243    | Ø 6          | For inserts with Ø 6 mm                                       |

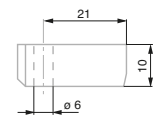
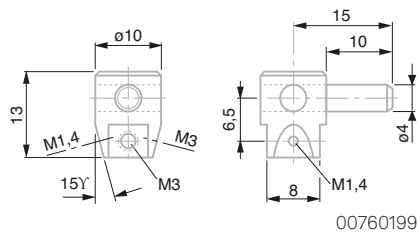
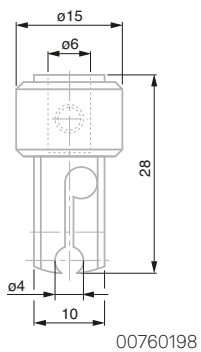
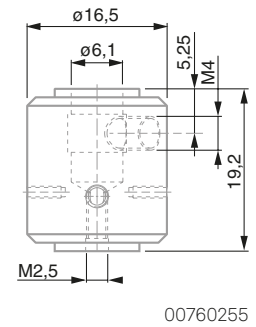
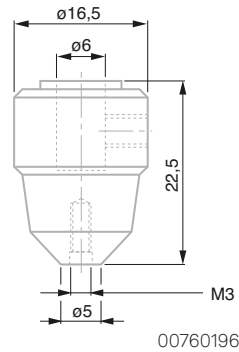
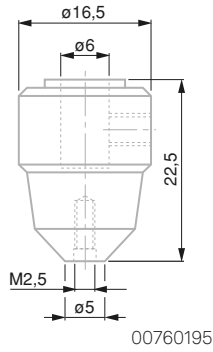
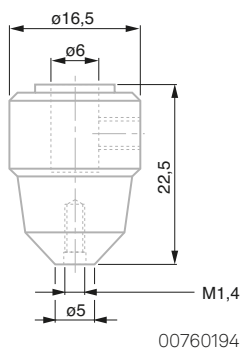


### Probe holders for TESA $\mu$ -HITE range

To provide the most suitable solution for every need, TESA offers a wide range of probe insert holders directly compatible with TESA  $\mu$ -HITE columns.



| Part number | Execution | Fixing<br>mm | Particular characteristics            |
|-------------|-----------|--------------|---------------------------------------|
| 00760187    | Radial    |              |                                       |
| 00760199    | Radial    | Ø 4          | For M1,4 (2x) and M3 (2x) inserts     |
| 00760194    | Axial     | Ø 6          | For M1,4 inserts                      |
| 00760195    | Axial     | Ø 6          | For M2,5 inserts                      |
| 00760196    | Axial     | Ø 6          | For M3 inserts                        |
| 00760198    | Radial    | Ø 6          | For M4 inserts                        |
| 00760255    | Radial    | Ø 6          | For M1,4 (2 x) and M2,5 (3 x) inserts |





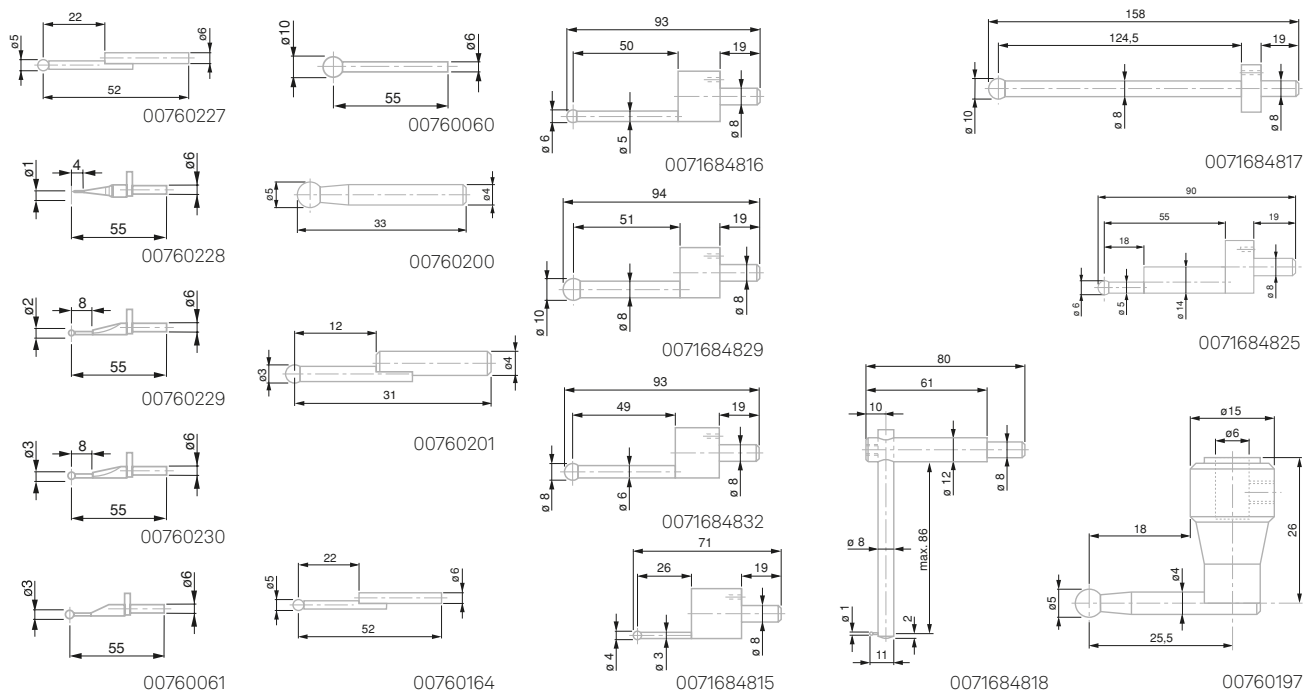
## Probe insert and probe insert holder

### Ball tip insert, mounting shaft $\varnothing 4, \varnothing 6$ & $\varnothing 8$ mm



00760227 + 00760243

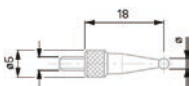
| Part number | Diameter | Probe length | Fixing          | Material         |
|-------------|----------|--------------|-----------------|------------------|
|             | mm       |              |                 |                  |
| 0071684818  | 1        | 80           | $\varnothing 8$ | Steel            |
| 0071684815  | 4        | 71           | $\varnothing 8$ | Tungsten carbide |
| 0071684825  | 6        | 90           | $\varnothing 8$ | Tungsten carbide |
| 0071684816  | 6        | 93           | $\varnothing 8$ | Tungsten carbide |
| 0071684832  | 8        | 93           | $\varnothing 8$ | Tungsten carbide |
| 0071684829  | 10       | 94           | $\varnothing 8$ | Tungsten carbide |
| 0071684817  | 10       | 158          | $\varnothing 8$ | Tungsten carbide |
| 00760228    | 1        | 55           | $\varnothing 6$ | Tungsten carbide |
| 00760229    | 2        | 55           | $\varnothing 6$ | Tungsten carbide |
| 00760230    | 3        | 55           | $\varnothing 6$ | Tungsten carbide |
| 00760061    | 3        | 55           | $\varnothing 6$ | Tungsten carbide |
| 00760197    | 5        | 25,5         | $\varnothing 6$ | Tungsten carbide |
| 00760062    | 5        | 34,1         | $\varnothing 6$ | Tungsten carbide |
| 00760227    | 5        | 52           | $\varnothing 6$ | Tungsten carbide |
| 00760164    | 5        | 54,8         | $\varnothing 6$ | Steel            |
| 00760060    | 10       | 55           | $\varnothing 6$ | Tungsten carbide |
| 00760201    | 3        | 31           | $\varnothing 4$ | Tungsten carbide |
| 00760200    | 5        | 33           | $\varnothing 4$ | tungsten carbide |



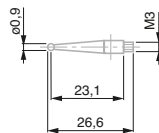
**Ball probes, M2,5 and M3 mounting**



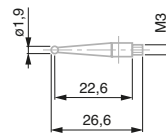
| Part number | Diameter<br>mm | Probe length<br>mm | Fixing<br>mm | Material         | Particular characteristics         |
|-------------|----------------|--------------------|--------------|------------------|------------------------------------|
| 00760180    | 0,9            | 26,6               | M3           | Steel            | For TESA-HITE, MICRO-HITE & μ-HITE |
| 00760181    | 1,9            | 26,6               | M3           | Steel            | For TESA-HITE, MICRO-HITE & μ-HITE |
| 00760182    | 2,9            | 26,6               | M3           | Steel            | For TESA-HITE, MICRO-HITE & μ-HITE |
| 03560051    | 1              | 18                 | M2,5         | Tungsten carbide | For TESA-HITE, MICRO-HITE & μ-HITE |
| 03560052    | 2              | 18                 | M2,5         | Tungsten carbide | For TESA-HITE, MICRO-HITE & μ-HITE |
| 03560053    | 3              | 18                 | M2,5         | Tungsten carbide | For TESA-HITE, MICRO-HITE & μ-HITE |
| 03560054    | 4              | 18                 | M2,5         | Tungsten carbide | For TESA-HITE, MICRO-HITE & μ-HITE |
| 03560055    | 5              | 18                 | M2,5         | Tungsten carbide | For TESA-HITE, MICRO-HITE & μ-HITE |
| 03560056    | 6              | 18                 | M2,5         | Tungsten carbide | For TESA-HITE, MICRO-HITE & μ-HITE |
| 03560057    | 7              | 18                 | M2,5         | Tungsten carbide | For TESA-HITE, MICRO-HITE & μ-HITE |
| 03560058    | 8              | 18                 | M2,5         | Tungsten carbide | For TESA-HITE, MICRO-HITE & μ-HITE |



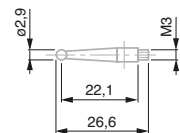
03560051-52-53-54-55-56-57-58



00760180



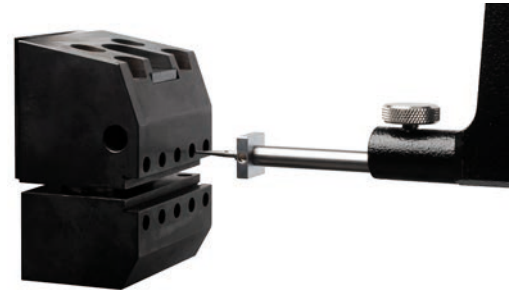
00760181



00760182

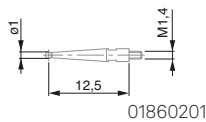
## Probe insert and probe insert holder

### Ball probes, M1,4 mounting

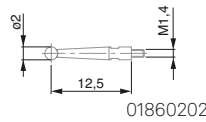


01860201 + 00760096

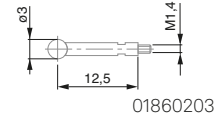
| Part number     | Diameter<br>mm | Probe length<br>mm | Fixing<br>mm | Material         | Particular characteristics              |
|-----------------|----------------|--------------------|--------------|------------------|---|
| <b>01860201</b> | 1              | 12,5               | M1,4         | Tungsten carbide | For TESA-HITE, MICRO-HITE & $\mu$ -HITE |
| <b>01860202</b> | 2              | 12,5               | M1,4         | Tungsten carbide | For TESA-HITE, MICRO-HITE & $\mu$ -HITE |
| <b>01860203</b> | 3              | 12,5               | M1,4         | Tungsten carbide | For TESA-HITE, MICRO-HITE & $\mu$ -HITE |
| <b>01860211</b> | 1              | 36,5               | M1,4         | Tungsten carbide | For TESA-HITE, MICRO-HITE & $\mu$ -HITE |
| <b>01860212</b> | 2              | 36,5               | M1,4         | Tungsten carbide | For TESA-HITE, MICRO-HITE & $\mu$ -HITE |
| <b>01860213</b> | 3              | 36,5               | M1,4         | Tungsten carbide | For TESA-HITE, MICRO-HITE & $\mu$ -HITE |



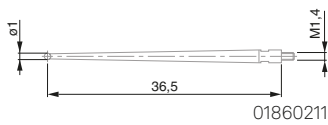
01860201



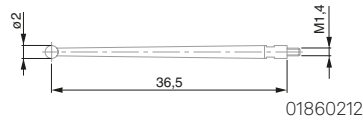
01860202



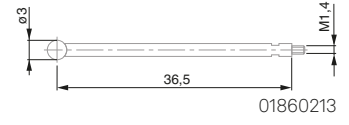
01860203



01860211



01860212

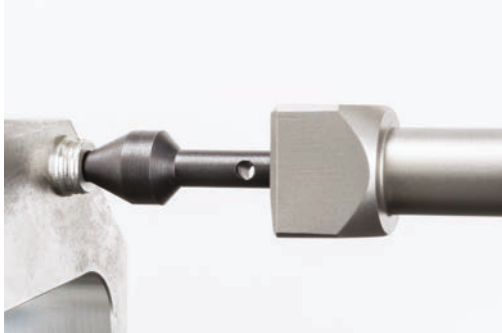


01860213

## Cone probes

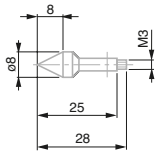
Conical probes are in principle not used for conventional measure such as "probing", since it is not possible by their geometry to trigger in an accurate way a measuring point.

They are mainly used for determining the location of bores as their shape allows quick mechanical positioning at the center of these elements.

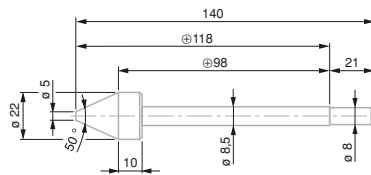


0071684822

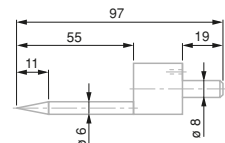
| Part number | Diameter | Probe length | Fixing | Material |
|-------------|----------|--------------|--------|----------|
|             | mm       | mm           | mm     |          |
| 0071684819  | 22       | 140          | Ø 8    | Steel    |
| 0071684822  | 6        | 97           | Ø 8    | Steel    |
| 00760183    | 8        | 28           | M3     | Steel    |



00760183



0071684819



0071684822

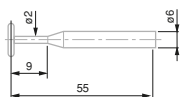
## Disc probes

As their name suggests, these styli are disc shaped with variable thicknesses and diameters to allow for probing of centring shoulders and grooves.

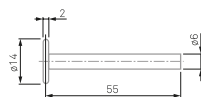
These accessories are often used in interior bore measurements where they are a good substitute to the star shaped stylus if this one cannot be used.



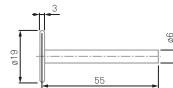
| Part number | Diameter | Probe length | Fixing | Material         |
|-------------|----------|--------------|--------|------------------|
|             | mm       | mm           | mm     |                  |
| 0071684827  | 12       | 91           | Ø 8    | Tungsten carbide |
| 00760074    | 4,5      | 55,5         | Ø 6    | Tungsten carbide |
| 00760075    | 14       | 56           | Ø 6    | Tungsten carbide |
| 00760076    | 19       | 56,5         | Ø 6    | Tungsten carbide |



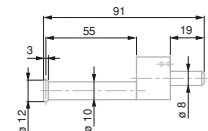
00760074



00760075



00760076



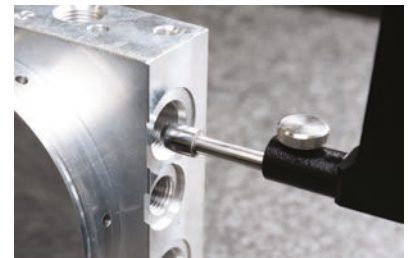
0071684827

## Probe insert and probe insert holder

### Cylindrical or barrel probes

The cylinder-shaped stylus are often used for the measurement of elements that cannot or only with difficulty be measured with a simple ball stylus. Indeed, it happens that for some measures the contact between the accessory and the part to be measured cannot be guaranteed when the end of the accessory is a sphere.

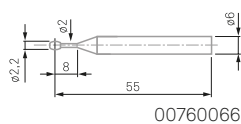
It can also be used for measuring threaded elements and often for the determination of center tapped holes



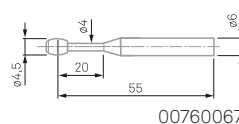
0071684820

00760068

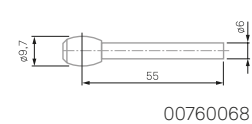
| Part number | Diameter<br>mm | Probe length<br>mm | Fixing<br>mm | Material                                     | Particular characteristics       |
|-------------|----------------|--------------------|--------------|--|----------------------------------|
| 03510502    | 3,3            | 6                  | M2,5         | Carbide                                      | Counter-nut for radial alignment |
| 03510503    | 4              | 6                  |              | Carbide                                      | Counter-nut for radial alignment |
| 0071684820  | 10             | 96                 | Ø 8          | Steel  |                                  |
| 00760066    | 2,2            | 57,5               | Ø 6          | Tungsten carbide                             |                                  |
| 00760067    | 4,5            | 60                 | Ø 6          | Tungsten carbide                             |                                  |
| 00760068    | 9,7            | 62,5               | Ø 6          | Tungsten carbide                             |                                  |
| 00760082    | 2              | 58,5               | Ø 6          | Tungsten carbide                             |                                  |
| 00760093    | 10             | 91                 |              | Steel basis, measuring face tungsten carbide |                                  |



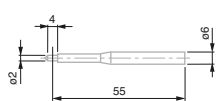
00760066



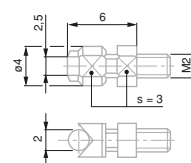
00760067



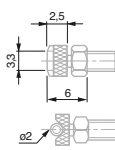
00760068



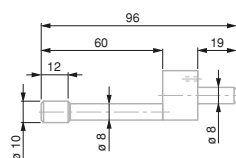
00760082



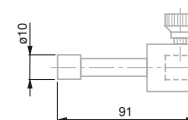
03510503



03510502



0071684820

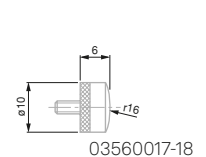
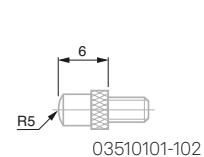
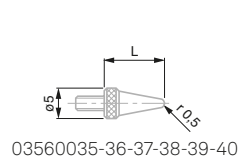
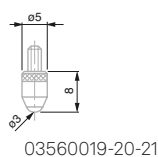
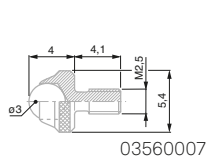
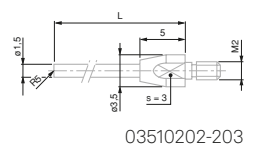
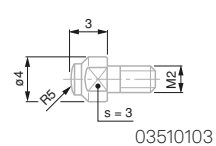
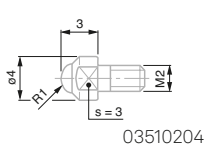
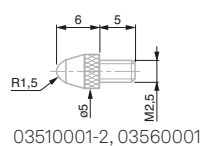
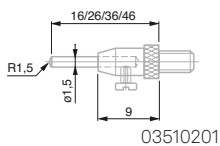


00760093

## Hemispherical inserts

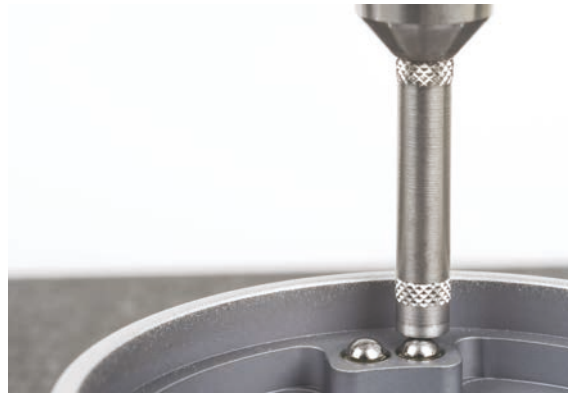


| Part number | Measuring face(s) | Probe length<br>mm | Fixing<br>mm | Material | Particular characteristics |
|-------------|-------------------|--------------------|--------------|----------|----------------------------|
| 03510201    | R1,5              | 16, 26, 36, 46     | M2,5         | Steel    | Interchangeable pin        |
| 03510202    |                   | 16                 |              | Carbide  |                            |
| 03510203    |                   | 26                 |              | Carbide  |                            |
| 03510204    | R 1               | 3                  |              | Carbide  |                            |
| 03510001    | R 1,5             | 5                  |              | Steel    |                            |
| 03510002    | R 1,5             | 5                  |              | Carbide  |                            |
| 03510101    | R 5               | 6                  |              | Steel    |                            |
| 03510102    | R 5               | 6                  |              | Carbide  |                            |
| 03510103    | R 5               | 3                  |              | Carbide  |                            |
| 03560001    | R 1,5             | 5                  |              | Sapphire |                            |
| 03560007    | R 1,5             | 4                  |              | Carbide  |                            |
| 03560017    | R 16              | 6                  |              | Steel    |                            |
| 03560018    | R 16              | 6                  |              | Carbide  |                            |
| 03560019    | R 1,5             | 8                  |              | Steel    |                            |
| 03560020    | R 1,5             | 8                  |              | Carbide  |                            |
| 03560021    | R 1,5             | 8                  |              | Ruby     |                            |
| 03560035    | R 0,5             | 5                  |              | Steel    |                            |
| 03560036    | R 0,5             | 10                 |              | Steel    |                            |
| 03560037    | R 0,5             | 15                 |              | Steel    |                            |
| 03560038    | R 0,5             | 20                 |              | Steel    |                            |
| 03560039    | R 0,5             | 30                 |              | Steel    |                            |
| 03560040    | R 0,5             | 40                 |              | Steel    |                            |

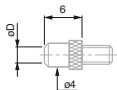


## Probe insert and probe insert holder

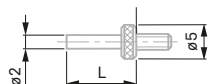
### Inserts with a flat measuring face



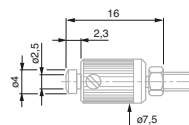
| Part number | Diameter<br>mm | Probe length<br>mm | Fixing<br>mm | Material | Particular characteristics |
|-------------|----------------|--------------------|--------------|----------|----------------------------|
| 03510902    | 4              | 16                 | M2,5         | Carbide  | Adjustable parallelism     |
| 03560008    | 1,5            | 20                 | M2,5         | Steel    | Interchangeable pin        |
| 03560009    | 1,5            | 20                 | M2,5         | Carbide  | Interchangeable pin        |
| 03510801    | 2,5            | 6                  |              | Steel    |                            |
| 03510802    | 2,5            | 6                  |              | Carbide  |                            |
| 03560022    | 3,4            | 6                  |              | Steel    |                            |
| 03560023    | 3,4            | 6                  |              | Carbide  |                            |
| 03560026    |                | 2,8                |              | Steel    |                            |
| 03560027    |                | 7,8                |              | Steel    |                            |
| 03560028    |                | 12,8               |              | Steel    |                            |
| 03560029    |                | 17,8               |              | Steel    |                            |
| 03560012    | 5              | 5                  |              | Steel    |                            |
| 03560013    | 5              | 5                  |              | Carbide  |                            |
| 03560014    | 10             | 6                  |              | Steel    |                            |
| 03560015    | 10             | 6                  |              | Carbide  |                            |
| 03560016    | 20             | 3,6                |              | Steel    |                            |



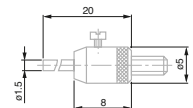
03510801, 03560026, 03510902



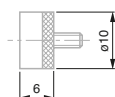
03560026-27-28-29



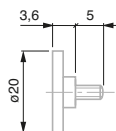
03510902



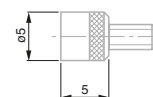
03560008-9



03560014-15



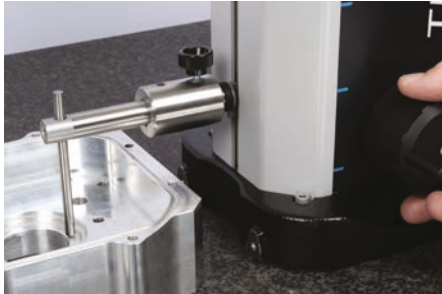
03560016



03560012-13

## Shaft probes

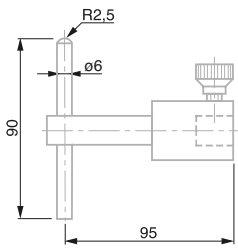
The shaft probes are mainly used to measure grooves, centring shoulders, blind bores, ...



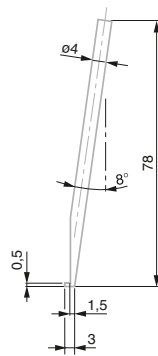
00760178



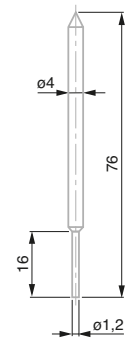
| Part number | Probe length<br>mm | Material | Particular characteristics              |
|-------------|--------------------|----------|---|
| 00760094    | 95                 | Steel    | 1 x flat face<br>1 x hemispherical face |
| 00760178    | 78                 | Steel    | Angle 8°                                |
| 00760179    | 76                 | Steel    | 1 x contact point face<br>1 x flat face |



00760094



00760178

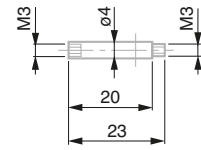


00760179

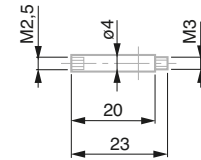


## Probe insert and probe insert holder

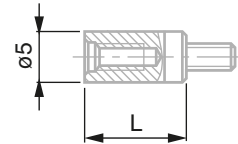
### Extensions



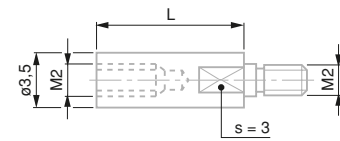
00760184



00760185



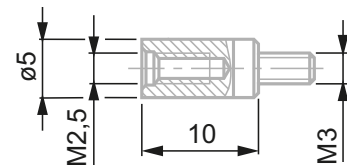
03560042-43-44-45-46-47-48-49-50



03540505-506

| Part number | Probe length<br>mm | Fixing<br>mm | Particular characteristics |
|-------------|--------------------|--------------|----------------------------|
| 00760184    | 20                 | M3           | For M3 insert              |
| 00760185    | 20                 | M3           | For M2,5 insert            |
| 03540505    | 10                 | M2           | For M2 insert              |
| 03540506    | 15                 | M2           | For M2 insert              |
| 03560042    | 10                 | M2,5         | For M2,5 insert            |
| 03560043    | 15                 | M2,5         | For M2,5 insert            |
| 03560044    | 20                 | M2,5         | For M2,5 insert            |
| 03560045    | 25                 | M2,5         | For M2,5 insert            |
| 03560046    | 30                 | M2,5         | For M2,5 insert            |
| 03560047    | 35                 | M2,5         | For M2,5 insert            |
| 03560048    | 40                 | M2,5         | For M2,5 insert            |
| 03560049    | 45                 | M2,5         | For M2,5 insert            |
| 03560050    | 50                 | M2,5         | For M2,5 insert            |

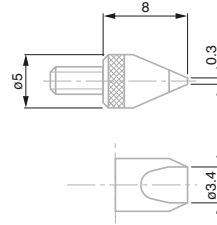
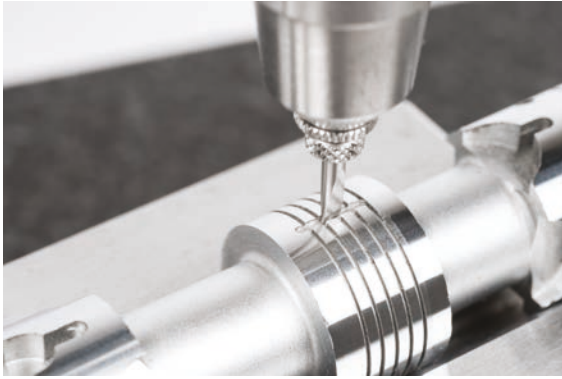
### Adaptors



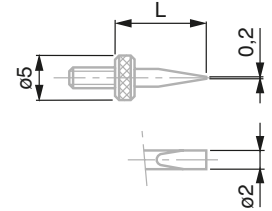
03560065

| Part number | Fixing<br>mm | Particular characteristics |
|-------------|--------------|----------------------------|
| 03560092    | M2,5         | For M2 insert              |
| 03560065    | M3           | For M2,5 insert            |

### Knife-edged measuring inserts



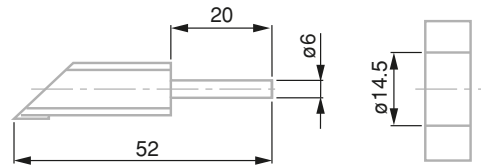
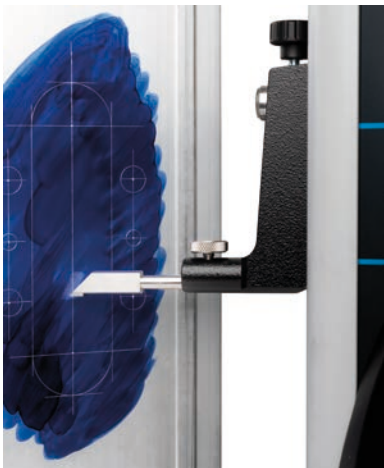
03560024-25



03560031-32-33-34

| Part number | Probe length<br>mm | Fixing<br>mm | Material         | Particular characteristics       |
|-------------|--------------------|--------------|------------------|----------------------------------|
| 03560031    | 5                  | M2,5         | Steel            | Counter-nut for radial alignment |
| 03560032    | 10                 | M2,5         | Steel            | Counter-nut for radial alignment |
| 03560033    | 15                 | M2,5         | Steel            | Counter-nut for radial alignment |
| 03560034    | 20                 | M2,5         | Steel            | Counter-nut for radial alignment |
| 03560024    | 8                  | M2,5         | Steel            | Counter-nut for radial alignment |
| 03560025    | 8                  | M2,5         | Tungsten carbide | Counter-nut for radial alignment |

### Scriber



00760165

| Part number | Probe length<br>mm | Fixing<br>mm | Material         |
|-------------|--------------------|--------------|------------------|
| 00760172    | 30                 | Ø 6          | Tungsten carbide |
| 00760165    | 32                 | Ø 6          | Tungsten carbide |

## Probe insert and probe insert holder

### Instrument sets



00760175

|                 |                 |  | For TESA-HITE and MICRO-HITE |          |          | For μ-HITE |          |
|-----------------|-----------------|--|------------------------------|----------|----------|------------|----------|
| Family          | Part number     | Description  | 00760232                     | 00760173 | 00760148 | 00760175   | 00760186 |
| Probe holders   | <b>00760057</b> | Probe support Ø 6 mm                               |                              |          | •        |            |          |
|                 | <b>00760086</b> | Probe holder Ø 6 mm<br>For depth up to 110 mm      |                              |          | •        |            |          |
|                 | <b>00760087</b> | Probe holder Ø 6 mm<br>For depth up to 185 mm      |                              |          | •        |            |          |
|                 | <b>00760177</b> | Adapter for M3 inserts                             |                              |          |          | •          |          |
|                 | <b>00760187</b> | Probe holder for offset measurement                |                              |          |          |            | •        |
| Probes          | <b>00760061</b> | Ball tip insert Ø 3 mm<br>Mounting Ø 6 mm          | •                            | •        | •        |            |          |
|                 | <b>00760060</b> | Ball tip insert Ø 10 mm<br>Mounting Ø 6 mm         |                              | •        | •        |            |          |
|                 | <b>00760180</b> | Ball tip insert Ø 0,9 mm<br>Mounting M3            |                              |          |          | •          | •        |
|                 | <b>00760181</b> | Ball tip insert Ø 1,9 mm<br>Mounting M3            |                              |          |          | •          | •        |
|                 | <b>00760182</b> | Ball tip insert Ø 2,9 mm<br>Mounting M3            |                              |          |          | •          | •        |
|                 | <b>00760228</b> | Ball tip insert Ø 1 mm<br>Mounting Ø 6 mm          |                              | •        | •        |            |          |
|                 | <b>00760229</b> | Ball tip insert Ø 2 mm<br>Mounting Ø 6 mm          |                              | •        | •        |            |          |
|                 | <b>00760230</b> | Ball tip insert Ø 3 mm<br>Mounting Ø 6 mm          |                              | •        | •        |            |          |
|                 | <b>00760066</b> | Barrel shaped insert Ø 2,2 mm<br>Mounting Ø 6 mm   |                              |          | •        |            |          |
|                 | <b>00760067</b> | Barrel shaped insert Ø 4,5 mm<br>Mounting Ø 6 mm   |                              |          | •        |            |          |
|                 | <b>00760068</b> | Barrel shaped insert Ø 9,7 mm<br>Mounting Ø 6 mm   |                              |          | •        |            |          |
|                 | <b>00760074</b> | Disc-shaped insert Ø 4,5 mm<br>Mounting Ø 6 mm     |                              |          | •        |            |          |
|                 | <b>00760075</b> | Disc-shaped insert Ø 14 mm<br>Mounting Ø 6 mm      | •                            | •        | •        |            |          |
|                 | <b>00760076</b> | Disc-shaped insert Ø 19 mm<br>Mounting Ø 6 mm      |                              |          | •        |            |          |
|                 | <b>00760082</b> | Cylindrical insert Ø 2 mm<br>Mounting Ø 6 mm       | •                            |          | •        |            |          |
|                 | <b>00760093</b> | Cylindrical insert Ø 10 mm                         |                              | •        | •        |            |          |
|                 | <b>00760183</b> | Cone-shaped insert Ø 8 mm<br>Mounting M3           |                              |          |          | •          | •        |
|                 | Shaft probes    | <b>00760094</b>                                    | Probe holder + rod           | •        | •        | •          |          |
| <b>00760178</b> |                 | Shaft probe Ø 4 mm<br>Angle 8°                     |                              |          |          | •          | •        |
| <b>00760179</b> |                 | Cylindrical shaft probe Ø 4 mm<br>1x pointed tip   |                              |          |          | •          | •        |
| Extensions      | <b>00760184</b> | Extension L20 mm<br>Mounting M3<br>For M3 insert   |                              |          |          | •          | •        |
|                 | <b>00760185</b> | Extension L20 mm<br>Mounting M3<br>For M2,5 insert |                              |          |          | •          | •        |